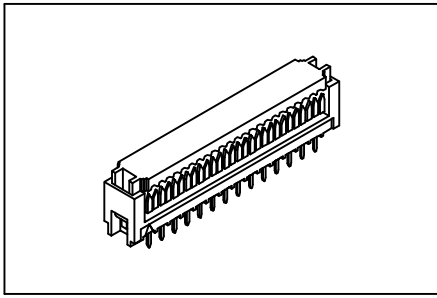


# Transition Plug 2.54mmX2.54mm(0.100"X0.100")

# GXCON



### Features:

- \* Fast connection of flat cable to PC board.
- \* Recommended 28AWG 1.27mm(0.050") flat cable.
- \* Plug directly into 2.54mmX2.54mm PC board.

### Material:

**Housing:** 30% Glass filled PBT UL94V-0.

**Contacts:** Phosphor Bronze.

**Plating:** Selective gold plated: gold plated on mating area and nickel plated on wire cutting area.

Gold plated over nickel.

Tin plated over nickel.

**Cable:** 1.27mm(0.050") pitch flat cable.

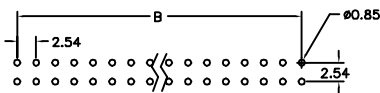
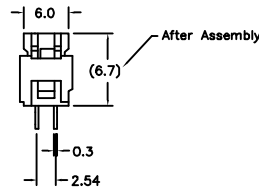
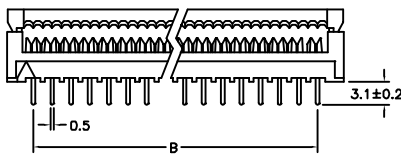
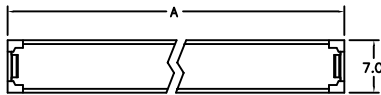
### Electrical Characteristics:

**Current Rating:** 1 AMP.

**Insulator Resistance:** 5000MΩmin. at DC 500V.

**Contact Resistance:** 20mΩmax. at DC 100mA.

**Operating Temperature:** -55°C ~ +105°C.



P.C. Board Layout

Position	Dimension	
	A	B
10	17.18	10.16
14	22.26	15.24
16	24.80	17.78
20	29.88	22.86
26	37.50	30.48
30	42.58	35.56
32	45.12	38.10
34	47.66	40.64
40	55.28	48.26
50	67.98	60.96
60	80.68	73.66
64	85.76	78.74

### Ordering information

**IDC02-** 60      3      B  
 Series    No. of      3: Selective Gold Plated    B: Black  
           Pin Count    1: Gold Plated                Y: Grey  
                           2: Tin Plated